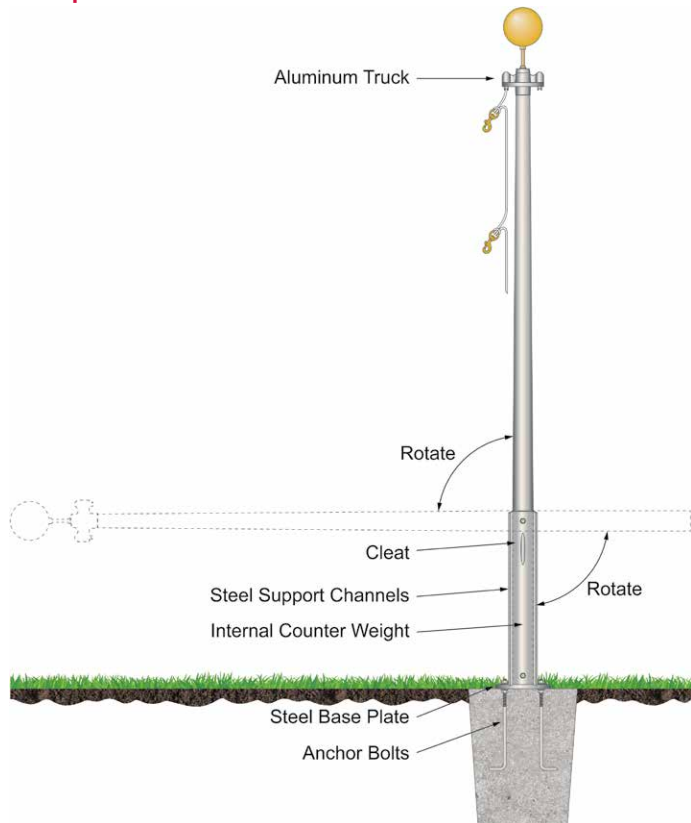


OUTDOOR FLAGPOLES

COUNTER-BALANCED TILTING FLAGPOLES

All of the 4"-10" diameter cone tapered aluminum flagpoles on pages 139 through 147 can be adapted with a counter-balanced tilt system. For ease of maintenance, the counter-balanced tilting flagpole has no equal. This unique design features a steel counter-weight inside the flagpole shaft to avoid disturbing the appearance of the tapered shaft. The base structure consists of two support channels welded to a base plate. The flagpole shaft is suspended by a pivot bolt and secured with a locking clip assembly. Anchor bolts are furnished for mounting to a concrete base.

Please allow 4 to 6 weeks after approval for shipping on satin poles.

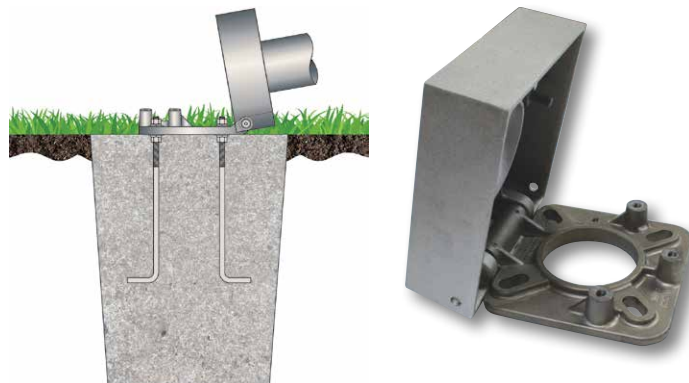


FOR COUNTER-BALANCED TILTING FLAGPOLES, ADD THE FOLLOWING PRICING TO ANY OF THE 4"-10" DIAMETER FLAGPOLES ON PAGES 139-147.

BUTT DIAMETER	PRICE
4"	\$1,630
5"	2,370
6"	3,060
7"	4,070
8"	5,560
10"	9,350

TILTING SHOE BASE FLAGPOLES

All of the cone tapered aluminum flagpoles on pages 139 through 153 with a 3", 4", 5" or 6" butt diameter can be supplied with a tilting shoe base. The tilting base is circumferentially welded to the base eliminating the need for a flash collar. The hinged portion of the base is held in place by (3) stainless steel, Allen head bolts and pivots on a solid aluminum pivot rod. Anchor bolts are furnished for mounting to a concrete base.



FOR TILTING SHOE BASE FLAGPOLES, ADD THE FOLLOWING PRICING TO ANY OF THE FLAGPOLES ON PAGES 139-153.

BUTT DIA.	1-2	3-6	7+
3"	\$450	\$430	\$400
4"	550	510	490
5"	570	540	500
6"	570	540	500

SHOE BASE FLAGPOLES

All of the cone tapered aluminum flagpoles on pages 139 through 153 can be supplied with a shoe base mounting. The aluminum base is circumferentially welded to the flagpole shaft. A spun aluminum flash collar is supplied as standard unless otherwise specified. Anchor bolts are furnished for mounting to a concrete base.



FOR SHOE BASE FLAGPOLES, ADD THE FOLLOWING PRICING TO ANY OF THE FLAGPOLES ON PAGES 139-153.

BUTT DIA.	1-2	3-6	7+
2-3/8"	\$270	\$260	\$250
3"	280	270	250
4"	300	290	280
5"	330	310	300
6"	350	330	310
7"	360	350	330
8"	390	380	360
10**	1,730	1,670	1,580
12**	Call for pricing.		

*In addition to a shoe base, a mandrel is inserted into pole for added structural support.